



Delivering a service model for bulky item reuse

Green Enterprise Dissemination Event 24th Sept 2020



Environmental Protection Agency

THE PROBLEM

OVER 1.2 MILLION

potentially reusable bulky items are going to waste on the island of Ireland every year.



REUSE & REPAIR

of bulky items has the potential to reduce waste and prolong the useable life of materials.



This in turn can support carbon savings, contribute towards sustainability initiatives, improve social impact & reduce costs

CRNI Members

Bryson Recycling
Building Better Futures

CLOTH Nappy Library
IRELAND CLG

DEAF ENTERPRISES
EMPLOYMENT AND SKILLS DEVELOPMENT

AN MHEITHEAL ROTHAR

BACK2NEW
RECYCLING PROJECT

camara
transforming education

CORK COMMUNITY BIKES

IRD Deabhallois FURNITURE REVAMP

Habitat for Humanity
Ireland

bounce back
recycling

ECO MATTRESS RECYCLING
WWW.ECOMATTRESSRECYCLINGIRELAND.COM

freetrade Ireland.ie
Don't rubbish it, reuse it

FoodCloud

EAST BELFAST MISSION
THE METHODIST CHURCH IN IRELAND

ICSA
Iris Charity Shops Association
www.icsa.ie

NEWKD
North, East and West Kerry Development
Na hAcht Chiarraí Thuaidh, Thoir agus Thiar

NATIVE EVENTS

Recreate
Creativity through Reuse

Recycle IT
Community Electrical Recycling

RehabRecycle
Investing in People, Changing Perspectives

Rethink

REVAMP 3R STORE
REDUCE REUSE RECYCLE

roscommon women's network

Refill .ie

REDISCOVERY CENTRE

thriftify

Up
cycling project

Usel

THE USELESS PROJECT

WeShare

THE PROJECT

Through this project, CRNI identified reuse schemes for public bodies to pass on unwanted bulky goods such as:*

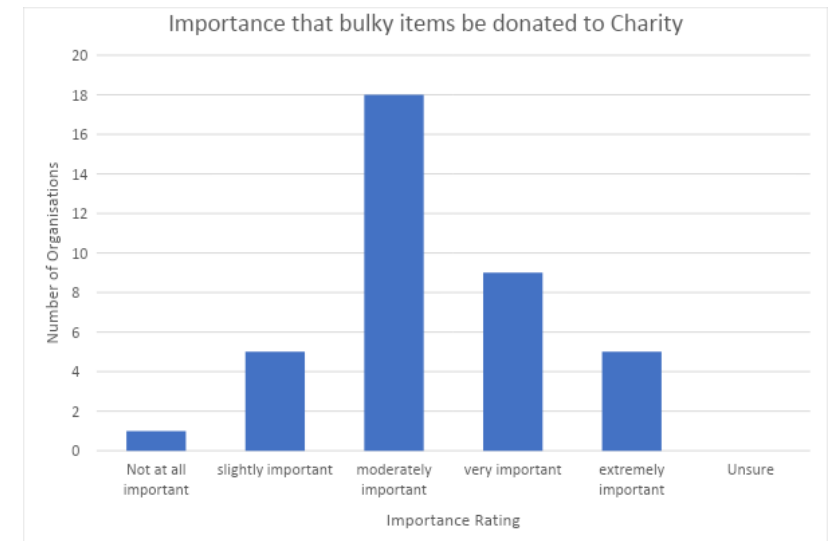
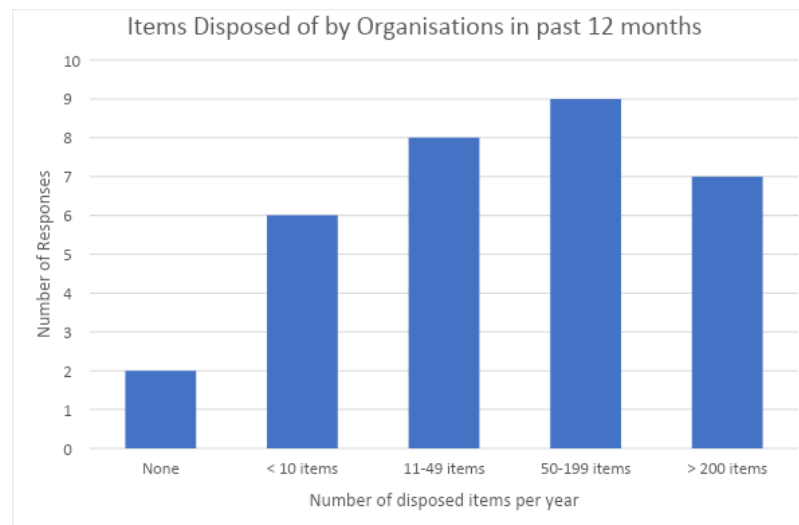
		
OFFICE FURNITURE	FIXTURES & FITTINGS	OFFICE CONSUMABLES
		
ELECTRONIC EQUIPMENT	LAB EQUIPMENT	MEDICAL/HOSPITAL EQUIPMENT

“for redistribution to **OTHER PUBLIC SECTOR OR THIRD SECTOR ORGANISATIONS**”



Stakeholder engagement

- Interviews
- Workshops
- Survey
- 4 x existing schemes



KEY BARRIERS



Focus on turnaround times



Internal processes
Staff training
Network of claimants



Transfer of
ownership

Identification of a scheme

- National reuse platform / services
 - €20k + support from > 60% PSBs
 - no natural home for national reuse platform
 - commercial solutions available
- Tailored service models
 - organisations want flexibility
 - manual or commercial platforms

smile :-)
Resource Exchange

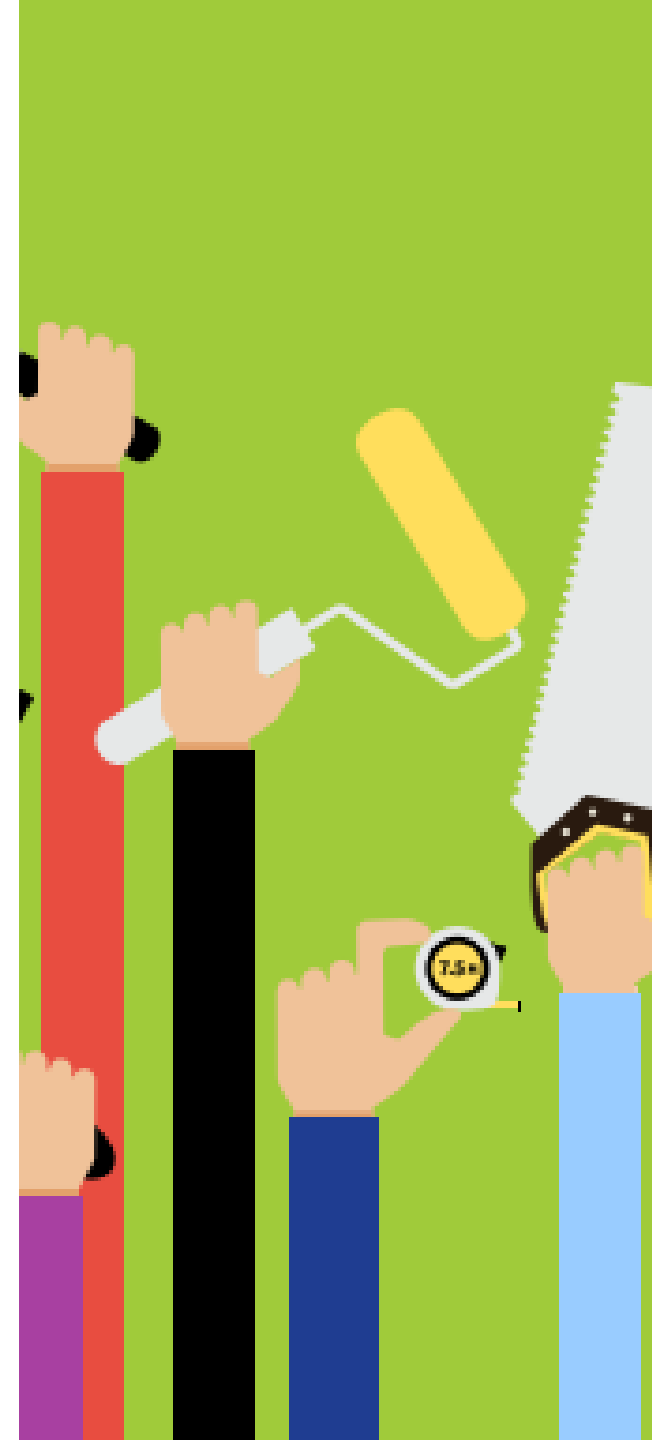


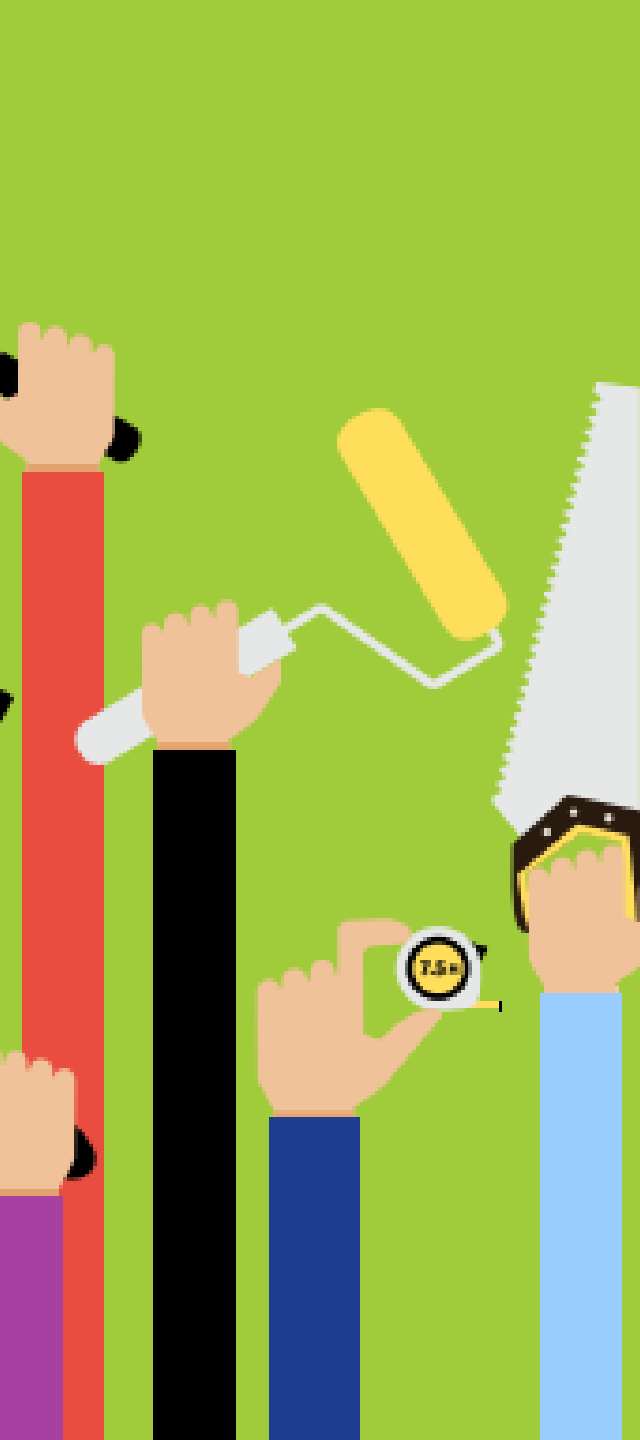
INTERNAL REUSE/EXCHANGE WITHIN A PUBLIC SECTOR BODY

A single organisation provides for the exchange of unwanted items either via an online platform or manual system.



Advantages	Disadvantages
Organisations can get started as soon as possible, if they have upper management buy-in.	A small network limits the capacity to exchange items
Possible low cost of implementation and no coordination / promotion required with external stakeholders	Without any external stakeholder involvement, the scheme relies on internal buy-in and engagement.
As all exchanges are internal there are limited liability or storage barriers	It requires an internal resource to take the initiative to establish a reuse platform within the organisation





EXTERNAL REUSE EXCHANGE WITH THIRD SECTOR

A single organisation offers unwanted items that are not claimed internally to the Third Sector. An online exchange platform is recommended for this model to facilitate communication

Advantages	Disadvantages
With the Third Sector involved, the number of potential claimants increases, which can reduce turnaround times and the need for storage.	Additional coordination / promotion required with Third Sector stakeholders
Third sector claimants arrange and pay for their own transport	It requires an internal resource to establish / manage a reuse platform within the organisation
Improve your social impact by partnering with charities and other not-for-profit bodies to provide them with unwanted bulky items.	Cost associated with implementation of a commercial platform.

REUSE / EXCHANGE WITHIN REGIONAL CLUSTERS

A cluster between the various organisations within a geographical area. A suitable commercial platform is implemented by all organisations in the cluster, which may also provide internal or internal and external exchanges.



Advantages	Disadvantages
A cluster of organisations widens the reuse network which should facilitate more exchanges, while minimising transport requirements.	Requires initiative of a lead public body to establish and maintain the cluster.
It provides internal reuse champions with peer to peer support and the connections with local stakeholders could help maintain momentum.	Additional management buy-in, coordination and promotion required with cluster participants especially by lead organisation
There could be an opportunity for one or several of the organisations involved to sponsor the reuse scheme.	Cost associated with implementation of a commercial platform (likely to be the simplest format for exchange).







REUSE / EXCHANGE FOR AN OFFICE REFURBISHMENT OR RELOCATION PROJECT

For public sector bodies who want to trial an element of reuse/ exchange as part of an office refurbishment or relocation project.

Advantages	Disadvantages
Allows organisations to trial an element of reuse/exchange without significant investment, and define how reuse could work for their organisation.	No network of potential claimants established - identifying claimants likely to take longer
No costs associated with software and staff resource is project based only	Does not involve wider organisation, staff training or developing a reuse culture within the organisation.
If successful this could be used as a basis to establish a permanent reuse scheme	Limited impact as relates to single project only

STEPS TO ESTABLISH A REUSE SCHEME:



1. BUY-IN OF UPPER MANAGEMENT



3. CREATE AN INTERNAL REUSE PROCESS



5. AGREE TRANSPORT OPTIONS



2. BUY-IN FROM OTHER DEPARTMENTS



4. PLAN FOR AVAILABLE STORAGE



6. LINK TO PURCHASING SYSTEM



7. GATHER FEEDBACK

BULKY ITEMS REUSE in the Public Sector

THE PROBLEM

OVER 1.2 MILLION potentially reusable bulky items are going to waste on the island of Ireland every year.



REUSE & REPAIR

of bulky items has the potential to reduce waste and prolong the useable life of materials.



THE PROJECT

Through this project, CRNI identified reuse schemes for public bodies to pass on unwanted bulky goods such as:



"for redistribution to **OTHER PUBLIC SECTOR OR THIRD SECTOR ORGANISATIONS**"



KEY BARRIERS

Time, cost and lack of knowledge or support associated with setting up a reuse scheme



THE SMALL SCALE

The demand for bulky items is not well developed and reuse organisations do not have the scale to accept large volumes of furniture or other bulky goods.



STORAGE

The lack of storage for unwanted items (prior to finding a claimant) is often identified as a barrier.

To remove the need for storage, it is recommended that public bodies focus on allowing enough turnaround time for items to be claimed.



REUSE SCHEMES

Different approaches can be taken to establish a reuse scheme within organisations, depending on requirements. Some options identified through the project are:

INTERNAL REUSE/EXCHANGE WITHIN A PUBLIC SECTOR BODY

A single organisation provides for the exchange of unwanted items either via an online platform or manual system.

EXTERNAL REUSE EXCHANGE WITH THIRD SECTOR

A single organisation offers unwanted items that are not claimed internally to the Third Sector. An online exchange platform is recommended for this model to facilitate communication.

REUSE/EXCHANGE WITHIN REGIONAL CLUSTERS

A cluster between the various organisations within a geographical area. A suitable commercial platform is implemented by all organisations in the cluster, which may also provide internal or external exchanges.

REUSE/EXCHANGE FOR AN OFFICE REFURBISHMENT OR RELOCATION PROJECT

For public sector bodies who want to trial an element of reuse/exchange as part of an office refurbishment or relocation project.

FOR MORE INFO on setting up reuse systems or to connect with CRNI members as potential third sector claimants or refurbishers, please get in touch with info@crni.ie or visit crni.ie/bulky-item-reuse/.



HOW TO GUIDE FOR BULKY ITEM REUSE IN PUBLIC SECTOR BODIES



<https://crni.ie/bulky-items-reuse/>

GREEN PUBLIC PROCUREMENT

Green Public Procurement is high on the Climate Action Plan agenda. The Irish Government's annual purchasing accounts for 10% to 12% of GDP. This provides the public sector with significant potential to invest in more socially responsible, resource-efficient, less polluting goods, services and works within the marketplace.

Supporting Social Enterprise



CRNI is grateful to the NWCPD for their vision and commitment in supporting reuse and social enterprise. For more information about this project or to enquire about similar projects, please contact info@crni.ie.

1. THE PROJECT

THE NATIONAL WASTE COLLECTION PERMIT OFFICE, CORMAC ST, TULLAMORE, CO. OFFALY.

In early 2019, the NWCPD issued a request for quotation for the delivery, assembly and installation of upcycled furniture for an office space including 16 work stations, two meeting rooms, a canteen, a chill out room, a reception area, and an outdoor seating area. CRNI assembled a consortium of Members and won the contract for one of Ireland's first Green & Social Public Procurement projects.



2. SUPPLIERS

For the 97 items of furniture making up this project, more than ten suppliers were approached. The main suppliers were CRNI Members the Rediscovery Centre and Back2New, with Recycle IT and FreeTrade also contributing.



3. IMPACTS

Sourcing all furniture and furnishings second hand reduces the demand for new products. This avoids all the impacts of manufacturing and distribution associated with making new goods.

The carbon savings from this project due to sourcing preloved furniture over new were approximately 2.6 tonnes CO₂. By working with social enterprises like the Rediscovery Centre and Back2New, the project also supported access to jobs and skills for people who might not otherwise have access to them.



4. FINDINGS

Some lessons from this project include:

- The small scale of the reuse sector is a challenge for procurement projects and requires the involvement of multiple suppliers
- Due to the unpredictable nature of the second hand market, flexibility is required in the specification of furniture and the design of different areas
- Collecting and delivering furniture from multiple sources and locations, especially where a workshop area is required for cleaning or assembling, can make logistics very challenging
- Staff buy-in and input should be sought to ensure the products are useful, understand expectations and identify issues and disruptions



<https://crni.ie/green-and-social-procurement/>

An illustration on the left side of the slide shows a hand in a grey sleeve holding a large, circular arrow symbol. The arrow is white with a yellow center and is set against a green background. The background also features faint, repeating icons of a lightbulb, a gear, and a leaf.

Next Steps

- Strong policy required
 - WAP - minimum target for procurement of used goods; public bodies to incorporate reuse policies in asset management and procurement plans.
- Adjust to scale
 - Start with one room or floor
- Good practice examples required
 - Start with small pilot reuse scheme - cluster model / refurbishment project

Follow up

- CRNI here to help
 - Formation of clusters / reuse schemes
 - Email info@crni.ie if interested in follow up
 - Opportunity to collaborate with commercial platform on a pilot
- Your feedback on what else can support this area



Thank you



Contact:

info@crni.ie

+353 87 173 5184

www.crni.ie

@CRNIreland

**Community Resources
Network Ireland**

