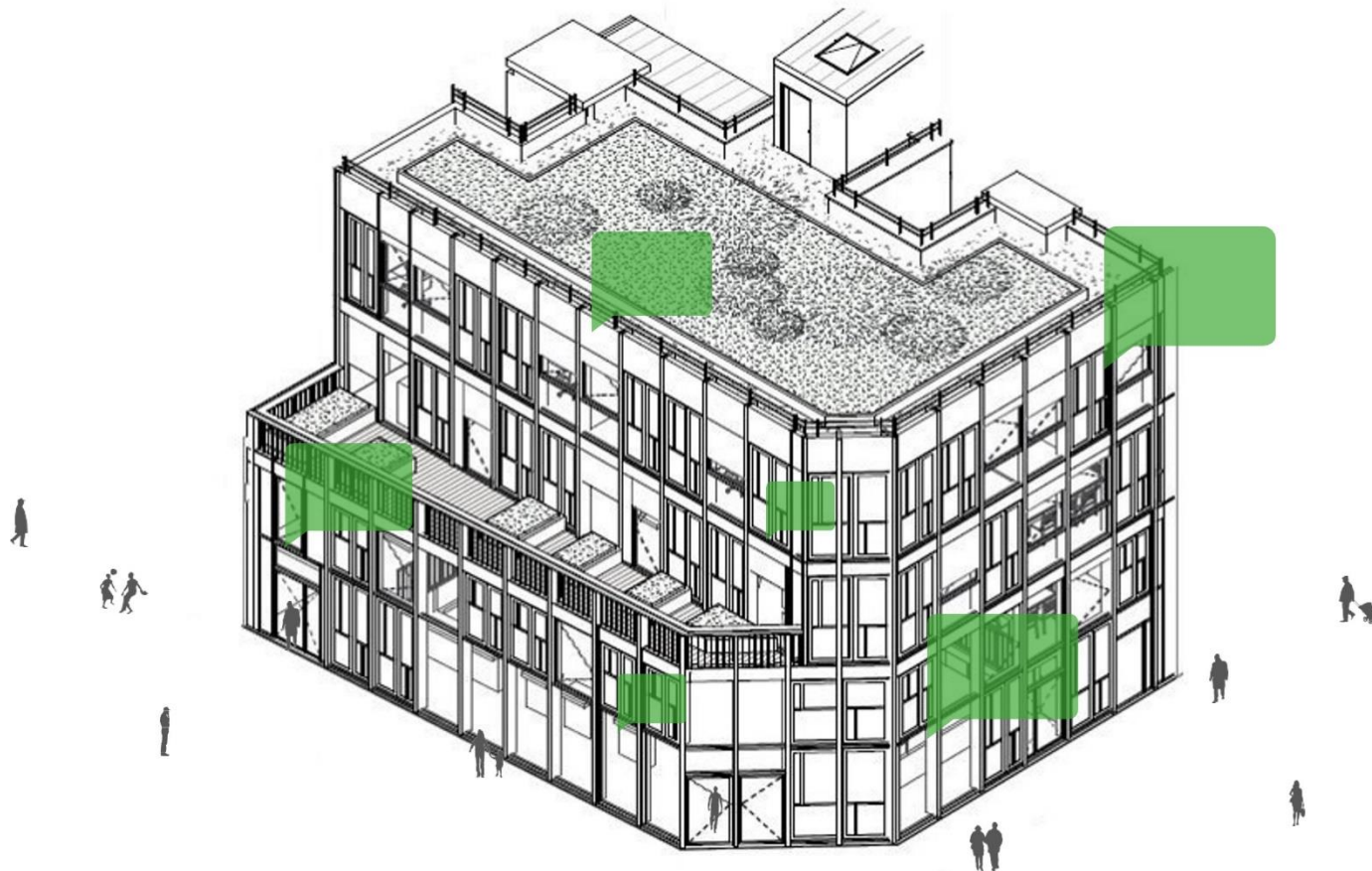


envie le labo



**TOWARDS A SUSTAINABLE AND SOLIDARITY
LIFESTYLE**



ENVIE NETWORK

Since 1984, the **Envie network** has been committed to **creating jobs to qualify those most excluded from the labor market** through **circular economy** activities. Therefore, Envie has been involved in **limiting waste** and helping to **change consumption patterns**.

Envie network in 2020 :

50 work integration organisations

2 800 employees including **2 000** in work integration path

1/3 Of waste from electrical and electronic equipment collected in France, ie 150 000 tons of waste treated

103 800 devices refurbished and distributed at lower prices

OUR AMBITION



Located in Paris at 10 rue Julien Lacroix (20^e), **Envie le Labo** aims to bring concrete solutions to citizens to lead a sustainable and solidarity lifestyle.



The mission of Envie le Labo is to **demonstrate**, through actions involving citizens and public and private actors, that **concrete, accessible and job-creating solutions exist to develop a circular, inclusive and solidarity-based economy that meets the needs and aspirations of citizens.**



AN ECO-PLACE WHERE...

... all publics can :



REPAIR

Its **household appliances** through our on-site repair and home repair services



GIVE

Its **old equipment** through our monthly collections



BUY REFURBISHED

And **guaranteed household appliances** at lower cost through the first Envie shop in Paris



LEARN

By doing through **free practical environmental workshops**, led by Envie and an ecosystem of professionals



DISCOVER

the site as a **circular and solidarity economy demonstrator** through **educational visits**

AVEC LE SOUTIEN DE :

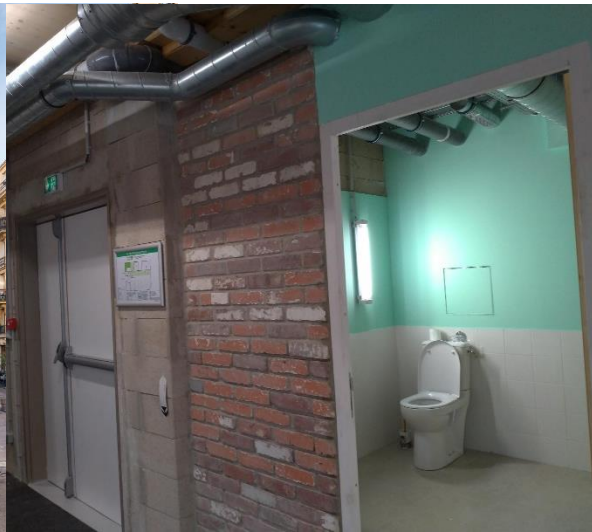


A SOBER AND ECORESPONSIBLE BUILDING

Envie wants to demonstrate that it is possible to build and design eco-friendly places with a limited budget.

Our circularity study concluded that we were able to **avoid the use of 19,6 tonnes of new elements**, i.e. **45% of all the materials and furniture used in the interior of this building**, through :

- **REDUCE - Material savings:** no false ceilings, very few paint, (7 tonnes)
- **REUSE - Materials and furniture reuse locally supplied from :**
 - deconstruction sites,
 - end of stocks from construction sites,
 - discontinued items.

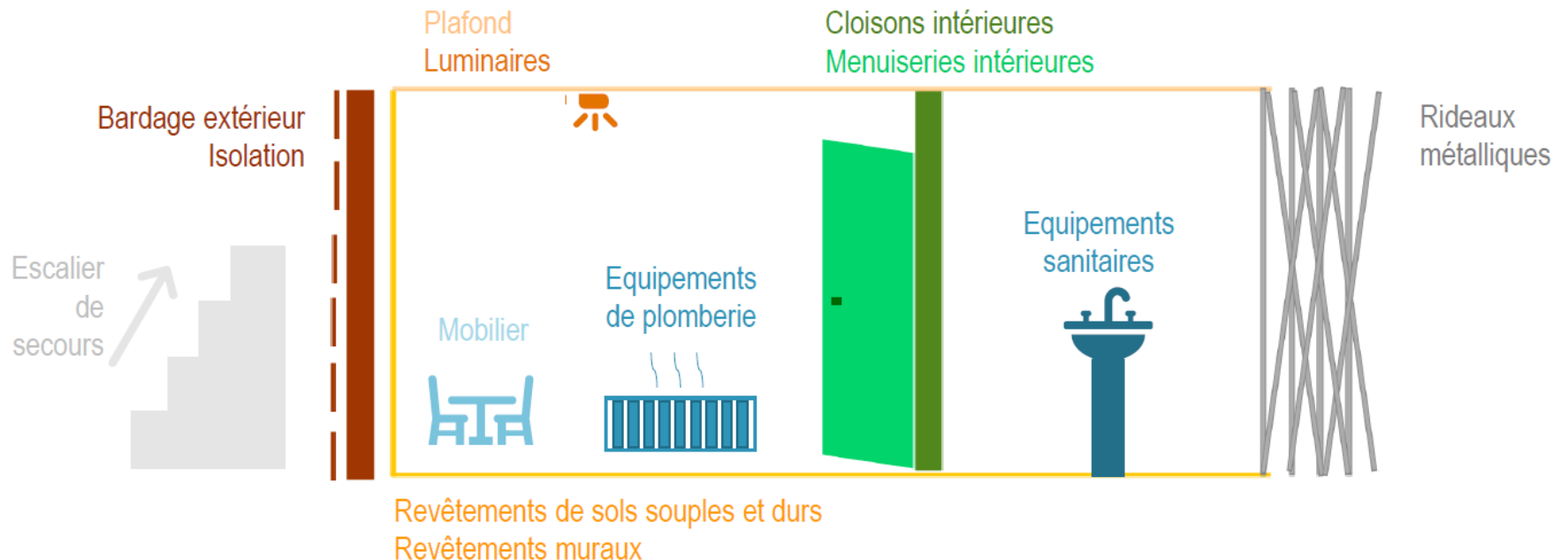


CIRCULARITY STUDY SCOPE

The environmental study concerns the second work and the interior design.

Envie was able to reuse a wide variety of building materials and furniture :

- Wood for cladding exterior
- Bricks
- Bathroom and kitchen sinks, toilets
- Radiators
- Doors and door handles
- Carpets, tiles
- Sanitary appliances, kitchen sinks
- Wood for custom furniture
- Glass for a glass wall and mirrors
- Chairs, desks and other office furniture







GROUND FLOOR - SHOP



GROUND FLOOR - SHOP



GROUND FLOOR – REPAIR WORKSHOP



1ST FLOOR — WASHING MACHINE DOORS' WALL

2ND FLOOR – EVENT SPACE





2ND FLOOR- CAFETERIA



3RD FLOOR — OFFICE SPACE



GREEN ROOF

MAIN RESULTS 1/2



BILAN DE CIRCULARITE INDICATEURS PRINCIPAUX

EVITEMENT DE MATÉRIAUX

- Réduction des surfaces nécessitant des revêtements de sols ou muraux
- Absence de faux-plafonds, plinthes, coffrages

RÉUTILISATION

- Tous les meubles sur-mesure ont été fabriqués à partir de matériaux de récupération.

Ces éléments sont principalement fabriqués en Ile-de-France.

16%
6,9 t



24%
10,4 t



5%
2,3 t



14%
6,1 t



RÉEMPLOI

- Conservation d'éléments présents déjà en possession d'ENVIE (mobilier, électroménager)

- Éléments de réemploi

Tous les éléments de réemploi sont en provenance d'Ile-de-France

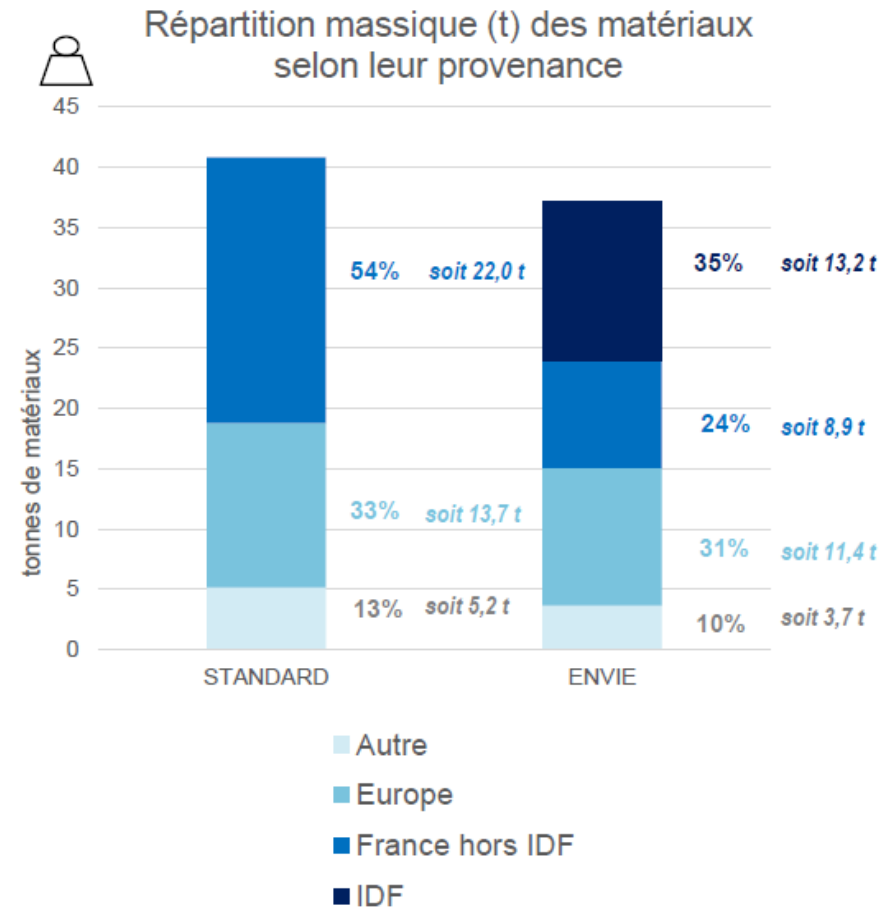
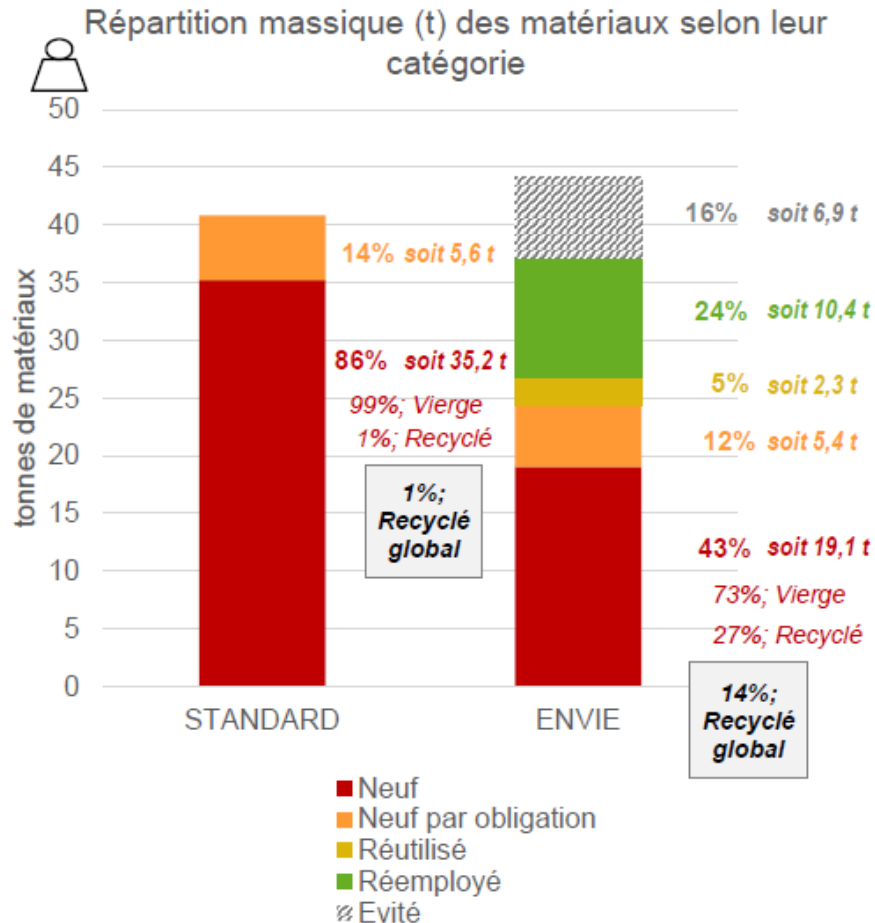
RECYCLE

- Éléments recyclés
- Matériaux à taux de recyclé plus élevé que les éléments standards



Soit 45% ou 19,6 tonnes d'éléments neufs évités

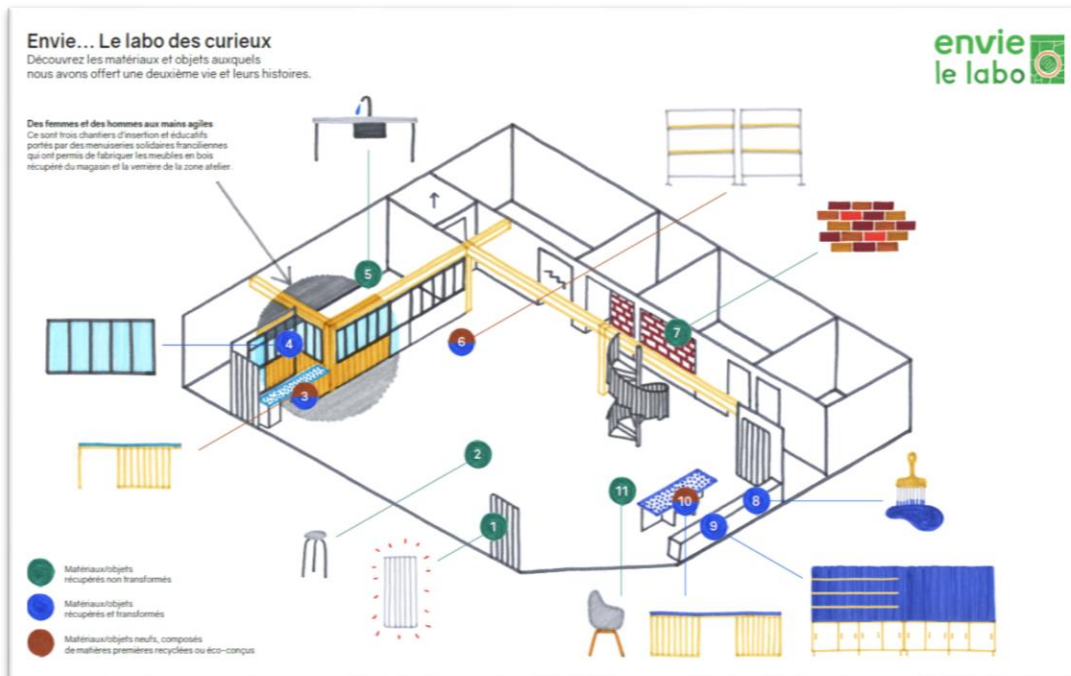
MAIN RESULTS 2/2



A SOBER AND ECO-RESPONSIBLE BUILDING

Envie Le Labo wishes to play a role of **circular and solidarity economy demonstrator**.

Educational tours of the site showcase the stories of the various materials and furniture reused .
The objective is to raise awareness and change the way people perceive reuse.



KEY LEARNINGS

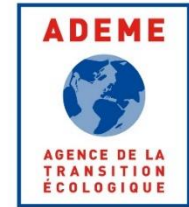
REUSE IN CONSTRUCTION OBSTACLES

- Regulatory and legal requirements
- Technical constraints
- Cost (time and money)
- Lack of usage guarantees
- Availability of items
- Aesthetics and practical choices
- Reuse /Skills/Access to information

HOW TO ACCELERATE THE REUSE IN CONSTRUCTION ?

- Make information more accessible
- Improve installation and dismantling methodologies for a longer material life
- Demonstrate the economic interest to building stakeholders
- Tax incentives to reuse

OUR KEY PARTNERS



ARC.
INNOVATION
GRAND PARIS



Under the sponsorship of :



OUR RECLAIMED BUILDING ELEMENTS PARTNERS



TO GO FURTHER



- envie.org/envielelabo/
- [Synthèse de l'étude de circularité](#)
- nesrine.dani@envie.org