



Community Resources Network Ireland (CRNI)
Repair, Reuse, Recycle

*The all-island representative body for community
repair, reuse and recycling organisations.*

Strategic Plan (2022 - 2025)

CONTENTS

03 Foreward

05 CRNI Vision, Mission & Values

06 CRNI Strategic Goals

07 Circular Economy in Action

08 Social Enterprise in Action

CRNI Strategic Goals

11 Support CRNI Members and strengthen the Community Resources Sector

12 Develop innovative projects and mainstream the community based repair, reuse and recycling sector.

13 Enhance CRNI governance and organisational capacity

14 Appendix A – CRNI Members

28 Appendix B – CRNI Board Members

29 Appendix C – CRNI Project Partners

30 Appendix D – CRNI Expected Outcomes

31 Appendix E – CRNI Member Feedback 2021



Foreward

Community Resources Network Ireland (CRNI) is the membership body for the community repair, reuse and recycling organisations across Ireland. CRNI's vision is to create an Ireland where the word 'waste' no longer exists.

Founded in 2010, CRNI has now over 11 years experience of supporting members and influencing local and national environmental policy and practice. It has also played a role in impacting on EU programmes and policies. CRNI has a strong grassroots community membership and has also strong links at national and international levels. Full members include social enterprises, charities and community organisations throughout Ireland. Affiliate members include those from the wider repair, reuse, recycling and waste prevention sector. Supporters are drawn from the wider environmental network (1).

CRNI is aligned to the United Nations Sustainable Development Goals (2), the EU Circular Economy (3) and the Irish Government Climate Breakdown Policy (4). CRNI and its members, most of whom are social enterprises, are also aligned to national social enterprise policy (5) and committed to the triple bottom line of: environmental, social and financial gain.

CRNI supports environmental gain by supporting our members, developing best practice, influencing policy, and sharing information. In 2020, our members diverted 18,170 tonnes of resources through reuse and 2,327 tonnes through recycling (6).

CRNI supports the development of best practice by collaborating in research projects which not only develop the capacity of our members but also contribute to local, regional, national and EU policy development. We share information and knowledge through our E-zine, sectoral events and our biannual conference. The CRNI biannual conference is attended by community organisations, policy makers, funders and businesses throughout Ireland and beyond.

CRNI supports social gain by supporting members create employment and training for people, often the most distant from the labour market and in areas of disadvantage. In 2020, CRNI members employed c. 800 people and provided education and training for over 64,000 people (7). In addition, members provided 8,677 people with volunteering opportunities (8).

CRNI supports financial gain by enabling members to maximise the economic value of reusable resources and create local sustainable employment. Our members generated some €40 million in revenue from recoverable resources in 2020 (9). The estimated value of our members employing people directly and providing high quality training opportunities for people from disadvantaged communities or long term unemployed was estimated at some €55 million (10).

1. List of CRNI Members Appendix A

2. <https://sdgs.un.org/goals>

3. 2020 EU Circular Economy AP.pdf

4. gov.ie - Adapting to Climate Breakdown (www.gov.ie)

5. <https://www.socent.ie/national-social-enterprise-policy-for-ireland-2019-2022>

6. Estimated to be approx. 1% of total waste arising in Ireland. Source CRNI Research 2016 from 15 Social enterprises

7. Member metrics 2020, CRNI annual mid-point survey, June/July 2021

8. Member metrics 2020, CRNI annual mid-point survey, June/July 2021

9. Member metrics 2020, CRNI annual mid-point survey, June/July 2021

10. Member metrics 2020, CRNI annual mid-point survey, June/July 2021

CRNI is a registered charity, its actions, decisions and the way it organises itself is underpinned by the guiding values and principles of: social inclusion, respect, collaboration and credibility. We promote equality by supporting members to employ and train people distant from the job market and provide accessible resource recovery to communities across Ireland. We respect people, communities and the environment. We collaborate with a range of stakeholders including local, regional, national and EU agencies, funders, community & voluntary groups, businesses, representative bodies and consumers. We constantly strive to be a credible organisation with committed members, evidence-based practice and rigorous analysis.

CRNI is a dynamic evolving network. The Network is a synergy of individual members. By working together and acting as one voice we have a greater impact than acting alone. CRNI supports members to strengthen their social enterprises and play an active role in mainstreaming the Community Resources Sector.

CRNI receives funding support from the Environmental Protection Agency (EPA) National Waste Prevention Programme. CRNI social enterprise members receive employment supports, targeting people distant from the job market, from the Department of Rural and Community Development and the Department of Employment Affairs and Social Protection.

This Strategic Plan (2022 - 2025) was developed in consultation with CRNI Members and a range of other stakeholders. This Plan outlines how CRNI will support the growth of our members, drive the mainstreaming of the Community Resource Sector and operate as an efficient and effective charity in supporting communities address environmental issues throughout Ireland. This Strategic Plan will be reviewed annually and the findings disseminated. Through the implementation of this Strategic Plan CRNI will play a leadership role in strengthening and mainstreaming the Community Resource Sector leading to a society where the word waste no longer exists.



Una Lavelle
Community Resources Network Ireland
Chairperson
January 2022

CRNI Vision, Mission & Values



Vision

Our vision is to create an Ireland where the word 'waste' does not exist and where our entire community benefits from the social, environmental and economic value of all reusable resources.



Mission

We support the growth of our Members and mainstreaming of the Circular Economy. We support communities throughout Ireland to gain from the social, environmental and economic benefits of repair, reuse and recycling.



Values

Our core values are:

Sustainability

We recognise that we are all interdependent and have a responsibility to future generations.

We promote responsible use of resources for long term sustainability.

Social Inclusion

We value the dignity, diversity, skills and worth of our members and the wider community.

We work to empower our sector.

We promote equality of access to resources.

Respect

We respect and value people, communities and the environment.

Collaboration

We work in collaboration with a range of partners in supporting our members to grow and develop; piloting innovative environmental solutions and strengthening community repair, reuse and recycling programmes throughout Ireland.

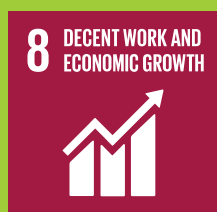
Excellence

We strive to achieve the highest standards. We gather evidence and are rigorous in our analysis and approach. We are transparent and accountable in all our dealings.

CRNI Strategic Goals

The CRNI Strategic Goals are to:

1. Support CRNI Members and strengthen the Community Resources Sector in an inclusive manner
2. Develop innovative projects and mainstream the community based repair, reuse and recycling sector
3. Enhance CRNI governance and organisational capacity

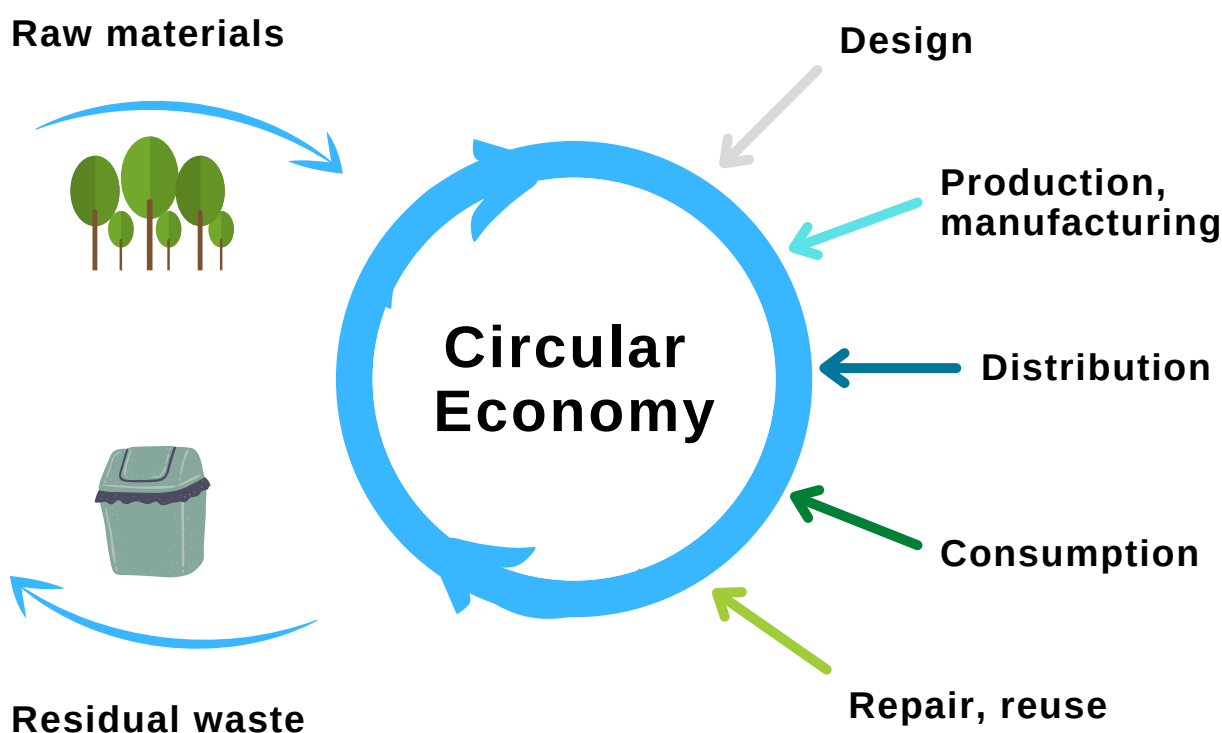


Circular Economy in Action

A linear economy is built on the principles of take, make and waste. This is not sustainable and alternatives need to be found. In a circular economy growth is separated from the use of scarce resources through production models based on long life products that can be repaired, renewed, upgraded or refurbished.

Circular Economy

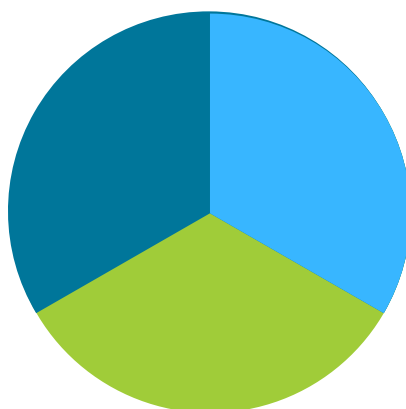
- Keeps the added value in products for as long as possible and aims to eliminate waste.
- Keeps resources within the economy when a product has reached the end of its life, so that it can be productively used again and again and create further value.



Social Enterprise in Action

The Social Enterprise Triple Bottom Line is:

- Environmental impact
- Social gain
- Positive economic impact



A Social Enterprise is an enterprise that:

- A Social Enterprise is an enterprise whose objective is to achieve a social, societal or environmental impact, rather than maximising profit for its owners or shareholders.
- It pursues its objectives by trading on an ongoing basis through the provision of goods and/or services, and by reinvesting surpluses into achieving social objectives.
- It is governed in a fully accountable and transparent manner and is independent of the public sector. If dissolved, it should transfer its assets to another organisation with a similar mission.

Source: National Social Enterprise Policy for Ireland 2019-2022

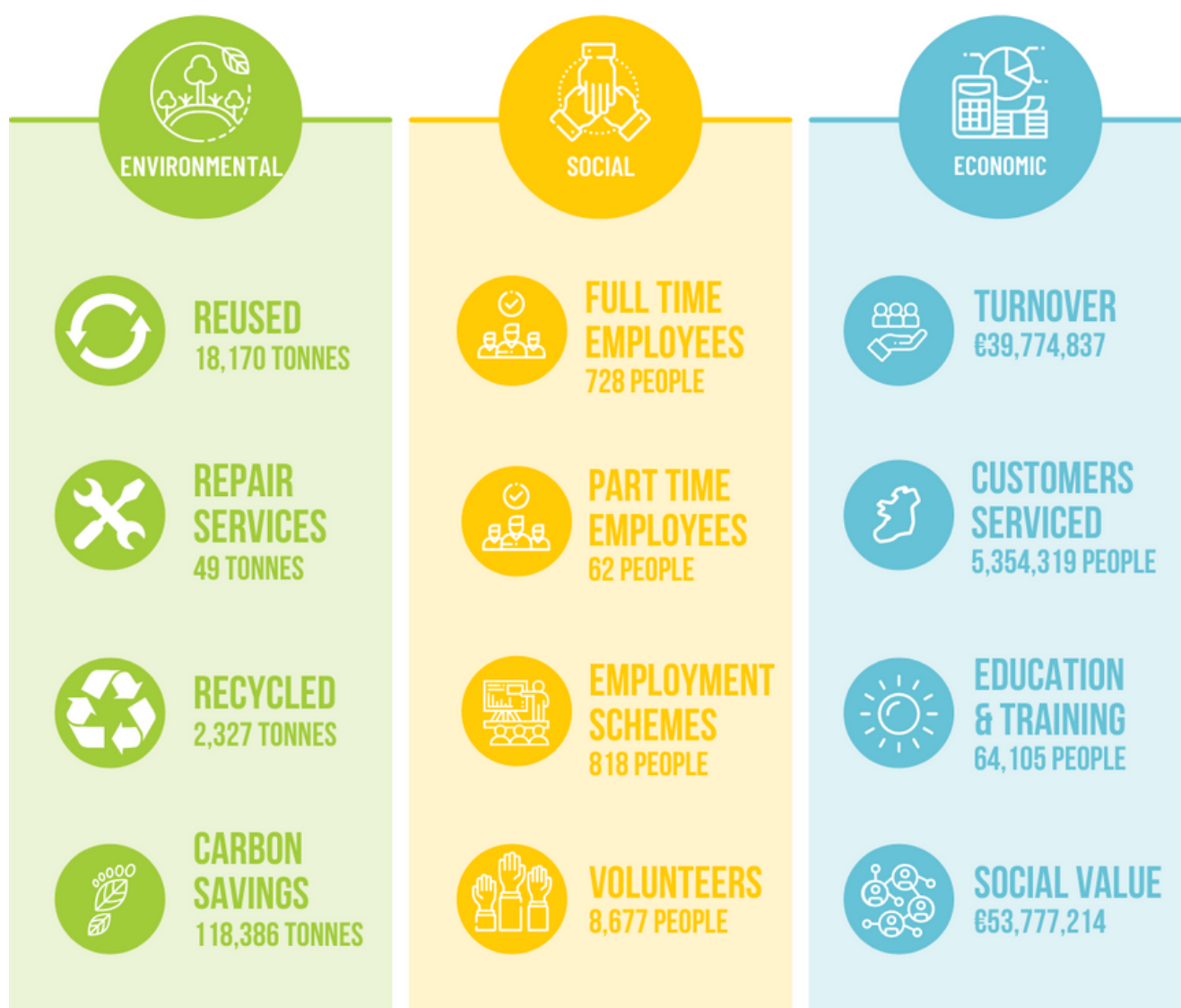
Supporting community repair, reuse and recycling benefits the triple bottom line and contributes towards the European goal of moving towards a Circular Economy and an inclusive society.

Social Enterprise in Action

CRNI Member Metrics 2020

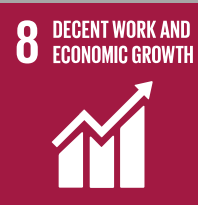


Member Metrics 2020



Source: CRNI annual mid-point survey, June/July 2021

CRNI Strategic Goals



Strategic Goal 1

Support CRNI Members and strengthen the Community Resources Sector

The Community Repair, Reuse and Recycle Sector is a growing sector made up of many different types of community based environmental organisations. CRNI supports its members to grow as individual organisations and also supports the community resources sector as a whole to grow. Most of our members trade as social enterprises, they operate within the Circular Economy and support the triple bottom line of social, environmental and economic impact.

CRNI provides information and supports knowledge sharing; developing and modelling best practice and collaborating creating innovative synergies. CRNI supports grass-root community organisations throughout Ireland to contribute to and deliver Irish and EU Environmental Policies, Programmes and Projects. The following supports will be provided to members and the sector throughout the lifetime of this strategic plan:

1. Develop CRNI Network

- 1.1 Grow membership base throughout Ireland.
- 1.2 Facilitate knowledge sharing and connectivity amongst members.
- 1.3 Provide networking opportunities and support members to promote CRNI.

2. Develop CRNI Member Capacity

- 2.1 Identify CRNI Members needs and deliver appropriate supports.
- 2.2 Provide a series of Business Training Modules.
- 2.3 Provide a series of Social Enterprise Capacity Development Modules.
- 2.4 Organise Themed Workshops for members.
- 2.5 Provide Resource/Information Materials.

3. Strengthen the Community Resources Sector

- 3.1 Further strengthen partnerships e.g., local government, local development companies, local community environmental groups.
- 3.2 Represent CRNI on National Environmental Fora and Working Groups
- 3.3 Represent CRNI on the EU RREUSE Programme.
- 3.4 Organise and host a biannual CRNI Conference.

4. Promote CRNI and its Members

- 4.1 Promote CRNI and its Members more widely throughout Ireland and beyond.
- 4.2 Advocate and act as a representative body for the Community Repair, Reuse and Recycle Sector, e.g. specific initiatives such as the insertion of social clauses in environmental contracts.

Goal 2

Develop innovative projects and mainstream the community based repair, reuse and recycling sector.

CRNI is pivotal in the Irish and international environmental movement as part of the Circular Economy. CRNI is uniquely positioned to explore the development of a widely recognised, accredited and meaningful environmental standard in the areas of repair, reuse and recycling.

CRNI can play a significant role in not only facilitating our members to grow but also in generating innovative ideas, piloting new initiatives and helping to roll-out national and international environmental policies, programmes and projects.

1. Identify innovative projects and source funding to develop pilot projects

1.1 Research, develop and pilot projects that enhance the capacity of CRNI Members and/or mainstream the Community Resource Sector.

1.2 Run pilot projects and, where evidence supports, advocate for national mainstreaming, e.g. The ReMark Project.

1.3 Disseminate findings of pilot projects through case studies, ezine, conference etc.

2. Collaborate with Partners and Members on a number of specific initiatives.

2.1 As an example, participate in the Circular Textiles Research Project with multiple partners.

2.2 Learn from and share best national and international practice through membership of networks such as RREUSE.

3. Contribute to and influence local, regional, national and EU environment and sustainability policies e.g., National Waste Management Policy; Regional Waste Management Strategy; Circular Economy Policy & Practice.

4. Collaborate with strategic partners such as the EPA, relevant government departments and EU organisations in the research and development; piloting and evaluating; discussion and dissemination of projects such as the ReMark Quality Assurance Initiative.

Goal 3

Enhance CRNI governance and organisational capacity.

CRNI is a well governed and well-run charity operating as a social enterprise. As an organisation CRNI is continuously examining ways in which it can grow and develop. As a national membership organisation, it is critical that CRNI models itself on best practice in terms of its governance and organisational efficiency. The following steps will be taken during this strategic plan in order to enhance CRNI's governance and organisational capacity.

1.Improve CRNI Governance

- 1.1 Review Board membership, sub-groups and put succession plan in place.
- 1.2 Review CRNI membership criteria for full, associate and support members.
- 1.3 Redefine relationship with the newly established Northern Ireland Resources Network.
- 1.4 Implement all processes and procedures necessary to fully comply with the Charities Governance Code.
- 1.5 Ensure statutory compliance e.g. Charity Regulator, Data Commissioner, CRO
- 1.6 Carry out an annual review of the Strategic Plan.

2.Develop CRNI Organisational Capacity

- 2.1 Review the functional requirements of the organisation.
- 2.2 Identify any skill set deficit from this review.
- 2.3 Implement a plan to address any deficit.

3.Deliver CRNI Communications Plan

- 3.1 Develop CRNI Communications Plan e.g., branding, social media and regular ezine.
- 3.2 Communicate and disseminate information to members, policy makers, funders, public, private, the community and voluntary sectors.
- 3.4 Refresh the existing CNRI website to include a Knowledge Hub and provide information for: early stage interested members; social enterprise developments; national and international best practice models and a wide range of funding streams.
- 3.5 Promote CRNI so that is more widely recognised at local, national and international levels.

4.Broaden CRNI Funding Base

- 4.1 Secure multi annual funding in line with our Strategic Plan.
- 4.2 Identify additional sources of funding and submit proposals accordingly e.g., SSNO Pobal.
- 4.3 Identify EU and national Circular Economy funding opportunities.

Appendix A

CRNI Members



An Mheitheal Rothar - Galway

An Mheitheal Rothar offers a full set of bicycle repair and service options, undertaken by our team of experienced mechanics. Their award winning ReCycle Your Cycle initiative takes bikes sent for scrap to Galway City Council Civic Amenities Centre and repairs them, and concurrently teaches valuable cycle mechanic skills to their trainees.

This saves carbon emissions and reduces pollution from transporting, smelting down and recasting scrap metal. At the same time it provides skilled jobs, training opportunities and an affordable, fossil fuel free means of transport.



Attention Attire - Dublin

Attention Attire was created as a response to Irish festival campsite waste. Every year, hundreds of weekend camping festivals across Ireland generate tonnes of camping waste that is extremely difficult to recycle. Items at the epicentre of this waste crisis are tents, sleeping bags and other material based camping gear which is near impossible to salvage sustainably.

They create limited edition, handmade outerwear and accessories from upcycled camping gear left behind at Ireland's music festivals. Each piece is crafted with recycled materials that would otherwise end up in landfill. We reuse everything – zips, toggles and velcro – ensuring nothing goes to waste.



Bounce Back Recycling - Galway

Bounce Back Recycling is a recycling company whose aim is to divert mattresses and furniture away from landfill. We provide a quality service for companies, councils & householders to recycle their unwanted waste rather than send it to landfill.

They work with local authorities across the country, servicing mattress amnesty events and providing bulky waste containers at Civic Amenity Sites to preserve the quality of mattresses for recycling. They also work with retail outlets to improve the recycling rates across the west of Ireland.



Bryson Recycling - Northern Ireland and Donegal

Bryson Recycling delivers high quality, efficient and cost effective recycling services across the UK and Ireland. At the core of everything they do is the triple bottom line; social responsibility, environmental sustainability and economic viability.

They are continually looking for ways to improve our recycling services and focus on ensuring that the materials collected for recycling are of a high quality and can be recycled locally. Over 80% of the materials we collect through their kerbside service in Northern Ireland and over 70% of the materials we collect at their Recycling Centres in Donegal are recycled on the island of Ireland. They use this approach as it benefits the local environment and economy and helps to support local jobs.

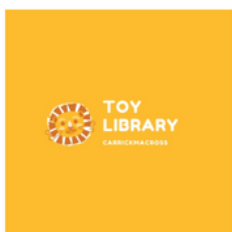


Camara Education - Nationwide

Camara Education Ireland provides highly secure and efficient solutions for IT equipment.

Operating since 2005, they have securely erased over 100,000 hard drives for businesses, government agencies, and private individuals. They reuse technology to enhance the education of disadvantaged students around the world. Any IT equipment which cannot be reused is recycled at an authorised WEEE facility.

In this way, they deliver both social and environmental impact: reducing waste and emissions around IT disposal, and delivering transformative digital education.



Carrickmacross Toy Library - Monaghan

Carrickmacross Toy Library promotes play for children aged 0-6 by enabling families to borrow, not buy quality, sustainably sourced toys.

80% of children's toys end up in landfill or in the sea after being used for an average of six months. Toys are difficult to recycle as they can contain materials that cannot be easily separated.

Carrickmacross Toy Library aims to address this environmental challenge through a sustainable toy lending service. Users can borrow up to four toys, puzzles or games for up to three weeks at a time. Parents pay a small membership fee that goes towards repairing or replacing broken toys.



Cloth Nappy Library Ireland - Nationwide

Cloth Nappy Library Ireland is a nationwide non-profit that provides cloth nappy loans and local support. We aim to help make cloth nappies mainstream by enabling parents to try them out and get support in what will suit them best, how to use them and where to get them.

Local libraries do a nappuccino where parents can see various cloth nappies, ask questions and borrow a kit to try at home. Our postal loans cater for newborns, right up to toddlerhood and beyond.

Disposable nappies take 200-500 years to decompose in landfills: using even just one cloth nappy a day reduces that number by almost 1,000. Five nappies a day 365 day a year for 2.5 years totals up to almost 4500 nappies.



Conscious Cup Campaign - Nationwide

Conscious Cup Campaign works with citizens, community groups, food to go businesses and government bodies to communicate and promote waste prevention through reuse.

They ask participating cafes to incentivise customers who bring reusables and in turn we promote those Conscious Cafes. We assist Cafes reduce their waste by advising them on policy in relation to single use plastics. We also provide support, information and toolkits to all types of community groups, organisations and educational facilities who want to reduce single use food to go packaging.



Cork Community Bikes - Cork

Recycle IT is a not for profit, social enterprise which creates sustainable local employment through a community based professional waste management services.

Recycle IT started as Clondalkin Community Recycling Initiative in 2002 with a collection service added in 2007. Each year we offer recycling drop off and collection services to thousands of homes and organisations across Dublin and surrounding areas. Income generated by collection and breakdown of e-waste is reinvested in training and employment and encourages environment awareness.



Cycle Sense - Cork

Cycle Sense makes it easier for people to cycle by sharing the many benefits of bikes from our reuse centre, where they carry out a range of activities from cycle training to advocacy, eco delivery, upcycling and upskilling.

They sell affordable secondhand bikes, paint and provide cycle trainers, bike maintenance, community cycle bus and training and upskilling opportunities. They divert paint from disposal & incineration to provide affordable good quality paint for reuse in the community through unique collaboration between Cork City and County Council. In addition to helping the environment, this has a positive economic impact through job creation and reduced costs for the community groups and individuals who use the paint.



Deaf Enterprises - Cork

Deaf Enterprises restores furniture with repair, reupholstery or French-polishing for private individuals as well as upholstery work for bars, hotels, nursing homes, schools, barbers, and playschools.

They also sell quality refurbished goods and offer a wide choice in occasional furniture such as fireside-chairs, Queen Anne chairs, pouffes and footstools which can be manufactured to your own spec and in your choice of fabric from our extensive top quality range. Their expert and friendly staff will be happy to assist and advise you in your choice and a home delivery service is available.

Their activities provide employment, training and work experience to the deaf community in Cork.



Diversion Green - Nationwide

Diversion Green shows households, community groups, schools how to make compost with their unavoidable food waste, to see it as a resource not a waste.

They offer food waste audits, food waste prevention plans, workshops, challenges, talks to open the conversation around food waste and work with clients to educate them and to show people how to prevent food waste, make compost and how to brown bin successfully as a last resort.



East Belfast Mission - Belfast

The East Belfast Mission (EBM) is a charity at the heart of the community in East Belfast. Our Restores specialise in selling a range of good quality second hand, refurbished and upcycled furniture, bicycles and clothing.

They sell these plus other secondhand items to raise vital funds for the renewal and transformation of the East Belfast Community, one of the most deprived areas of Northern Ireland. Based in the Skainos Centre, an urban regeneration project on the Newtownards Road in Belfast, EBM is dedicated to helping young and old from all backgrounds by transforming the lives of the most vulnerable.



Eco Mattress Recycling - Dublin

Eco Mattress Recycling was set up as the first mattress recycler in Ireland and also as a Social Economy Enterprise.

Mattresses can take several hundred years to degrade with up to 23cu. ft. of landfill required per mattress. They employ a deconstruction process that separates all the materials contained in mattresses and bed bases including steel springs, foam, cloth and wood. They work to develop markets for the waste derived from deconstructed mattresses. Their mattress recycling processes provide valuable hands-on work experience to people on back to work training programs.

Eco Mattress Recycling provide door to door mattress collection services nationwide. Eco Mattress Recycling provides a free collection service to all our commercial mattress suppliers.



Food Cloud - Dublin, Cork, Galway

FoodCloud enables the redistribution of surplus food from the food industry to the charity sector through two solutions – the FoodCloud Technology platform and FoodCloud Hubs.

FoodCloud exists first and foremost to reduce the environmental, social and economic impact of waste in the food supply chain. In the first instance we focus on redirecting surplus food in the food supply chain from disposal to consumption by people. They work with the food industry to help partners reduce their production of surplus food. Food waste causes four times more carbon emissions than global aviation. Food donation is a win-win for people and the planet.



Gateway to Education - Limerick

Gateway to Education Limerick provides secondhand school essentials, such as school books, reading books, clothing, and uniforms, at a nominal fee to support parents with the cost of sending their children to school and children who struggle with homework activities.

They also send surplus books to developing countries, where books are scarce and very expensive, to help open the door to knowledge.



Habitat for Humanity - Louth

Habitat ReStore is the low-cost DIY store that builds hope and homes- directly tackling poverty here in Ireland. It is a hub for Habitat's work, connecting the local and global.

By selling donated new and used building and home improvement materials, ReStore serves thousands of families who need help to improve their homes at low cost and diverts tons of material from landfill.

ReStore supports local people through training and employment opportunities and raises funds to support Habitat's work here at home and around the world.



IRD Dunhallow Furniture Revamp - Cork

IRD Dunhallow Furniture Revamp provides furniture restoration and upcycling services and sales, offering affordable, good quality second hand furniture. This contributes to the reduction of waste in the region.

From their establishment in 2016, they have collected in excess of 4500 items of furniture, diverting a net weight of over 110 tons from potentially ending up in landfills. Of this, over 103 tonnes have been redistributed in the community.

They also provide a refurbishment service for those who wish to have their old pieces upcycled and revived. IRD Dunhallow Furniture Revamp has a strict target of using no more than 10% new materials versus recycled material. To date, on average, less than 5% of the total net weight constitutes new material, including fabric for upholstery, new paints and varnishes, etc. These figures are carefully calculated and compiled each month to monitor Revamp's environmental performances.



The Irish Charity Shops Association - Nationwide

The Irish Charity Shops Association is the nationwide umbrella group for charities who operate shops and sell online as part of their fundraising activities. Our members range from large national charities to local, community based charities and our 43 members operate over 470 shops nationwide. All our members are registered with the Charities Regulator and have signed up to our Code of Charity Retailing that is a condition of their membership.

Textile reuse is the largest re-use activity in Ireland. Charity shops are the main drivers of this re-use activity and have been operating in this space for over 30 years.

Textile reuse is when you buy an item of clothing from a charity shop, second hand/vintage shop, or swap clothes with your friends instead of buying a new item. New clothes are now a low cost commodity and are often imported from low wage economies in Asia and eastern Europe.



KASI - Kerry

KASI, Killarney Immigrant Support Centre (formerly Killarney Asylum Seekers Initiative) was set up in 2000 to support Asylum Seekers, Refugees and other Migrants in Killarney and greater Killarney area. KASI operates a drop-in/resource centre providing supports and services.

KASI's work evolved from the above to setting up social enterprises like the Charity Shop, Community Garden, lunch service in schools and the latest one opening Going Green Café and a Zero/Waste Refill Store. The aim is to create employment to Asylum Seekers, Refugees and other Migrants through training, placements and employment in the said projects. All the projects are as such interlinked and not only addresses social and economic impact, but also environmental impact.



Kingdom Furniture Revamp - Kerry

Kingdom Furniture Revamp is Kerrys leading furniture upcycling project as well as retailer, specialising in the sales and renewing of home furnishings including sofas, units, TV Stands, sideboards, wardrobes and much more.

They are a not for profit Community Service employing people from the travelling community. Their main objectives are to supply and upcycle quality products at competitive prices whilst providing our customers with excellent levels of service and support. They also help to reduce the amount of large household waste being disposed of in landfill and provide a recycling alternative.

Something you are finished with can be revamped and passed on to a new home, saving it from landfill, with Kingdom Furniture Revamp.



Native Events - Nationwide

Native Events produces sustainable events, including shows and markets, demonstrating Irish innovations in crafts and sustainability.

They hire bespoke, ecodesign, upcycled furniture and decor, and temporary solar power installations for events, shows and activations. They offer a reusable cup solution for events partnering with industry leaders Event Cups Solution. They also salvage valuable materials such as tents and sleeping bags for upcycling purposes. Their comprehensive waste reduction strategies and toolkits can help events become truly clean and green.



Northside Community Enterprises - Cork

Northside Community Enterprises run an environmentally friendly paint re-use service.

The project is in partnership with Cork City Council and Cork County Council. Revive Paint at NCE rescues donated left over water-based paint from 2 Civic Amenity sites in and around Cork City and recycle it into premium quality paint for homeowners, community groups, contractors, and painters.

They filter, recolour and mix it into new, one-of-a-kind colours. Our premium quality paint is available for all the community (homeowners, community groups, contractors, and painters) at very affordable prices.



Oxfam - Nationwide

Your local Oxfam shop is the perfect place to snap up pre-loved clothes, books, vintage items and lots of other hidden treasures. Every penny or cent you spend in any one of our shops in Ireland helps to support our wonderful work around the world.

Their shops also accept any unwanted clothes or other items you might have. From impulse purchases to that top that colour clashes (and not in a good way) with the rest of your wardrobe, we all have things taking up precious space in our closets and on our shelves.



Recreate Ireland - Dublin

ReCreate is a social enterprise making art materials and educational supplies affordable and accessible to every sector of the community for all kinds of creative purposes.

The project is based around the concept known as Creative Reuse which encourages the public to reuse materials that would normally be thrown away in all kinds of creative and inventive ways. They source clean, reusable materials from businesses all over Ireland and supply these as arts and crafts materials and educational play resources for early years, primary/secondary schools, individual artists and students, families, community and special needs groups.

Membership is open to anyone and gives unlimited access to materials. Members pay an annual subscription fee and in turn have unlimited access to the materials stored in ReCreate's Warehouse Of Wonders (WOW).



Recycle IT - Dublin

Recycle IT is a not for profit, social enterprise which creates sustainable local employment through a community based professional waste management services.

Recycle IT started as Clondalkin Community Recycling Initiative in 2002 with a collection service added in 2007. Each year we offer recycling drop off and collection services to thousands of homes and organisations across Dublin and surrounding areas. Income generated by collection and breakdown of e-waste is reinvested in training and employment and encourages environment awareness.



The Rediscovery Centre - Nationwide

The Rediscovery Centre is the National Centre for a Circular Economy in Ireland. It is a creative movement connecting people, ideas and resources to support greener low-carbon living. At our headquarters in Ballymun, the Centre supports four reuse social enterprises: Rediscover Furniture, Rediscover Fashion, Rediscover Paint and Rediscover Cycling. These social enterprises use unwanted materials donated for reuse to create new upcycled products and designs. At the same time, they create training opportunities for the long term unemployed and all revenue generated from its activities are reinvested in the enterprise.



Refill Ireland - Nationwide

Refill Ireland is an environmental project aiming to make Irish towns and cities tap water refill friendly for everyone while on the go.

They locate and encourage the creation of locations on our TAP MAP where filling your reusable water bottle for FREE from an increasing number of refill stations becomes an easy to do everyday habit helping hydration and ultimately protecting our environment from bottle waste.

Their aim is to substantially reduce the amount of, and dependence on, consuming our drinking water in single use plastic bottles. Alongside their hard plastic tops, as everyone knows they frequently end up littering our streets, waterways, beaches, coastlines and seas.



Rehab Recycle - Dublin

Rehab Recycle facilitates secure donations of IT equipment to schools, charities and community groups through their Promise IT programme.

They take surplus or unused IT equipment from companies who are no longer using it, securely and certifiably wipe all the data from the hard drives, rebuild the equipment, clean it, repair where necessary, polish it and deliver it to its new home so it can begin its second life. They process and re-market thousands of assets, including computers, laptops, servers, networking equipment, TFT screens and communications systems across Europe on a weekly basis. In doing so, they support the sustainable of employment of people with disabilities.



Renew Enterprises - Waterford

Renew Enterprises repairs and services bicycles, tools and small engines and upcycles wood garden furniture such as picnic tables and benches, bird boxes, window boxes and outdoor bars.

They provide these saleable products with the purpose of benefiting the local community at large, and creating employment. Renew believes people have the right to participate fully in life from an economic, social and cultural perspective. They create full-time employment for people who are most distant from the labour market to learn, train and practice new skills and to experience working in a real time working environment and also offer accredited courses.



Rethink Ireland - Galway

Rethink inspires others to action, and to support their resilience and sustainability through demonstration and education (at all levels).

They inspire conversations through workshops, encouraging reflection and action that will help people rethink their consumption, their connection with nature and demonstrate sustainability. This is to enable and foster prevention of waste, through reuse as much as possible. Rethink also offer a workshop and education series.



Revamp 3Rs - Longford

Revamp 3Rs Longford combines environmental, social and economic factors, by recycling unwanted household furniture for the disadvantaged with training and the provision of employment opportunities for long-term unemployed young people.

They collect furniture and household goods that are suitable for reuse, carry out repairs and refurbishment work in our workshop with steam cleaning and basic repair work adding value and usefulness to the many items currently disposed of. The high quality low cost household furniture is then made available for sale in the showroom.



Roscommon Women's Network - Roscommon

Roscommon Women's Network is a local community project and charity based in Roscommon that operates in textile upcycling training through a project called Women's Environmental Community Action Project (WECAN), funded through the EPA Green Enterprise programme.

Their aim is to reduce the unsold textiles that are generated by our charity shop by upcycling these textile items into different products for sale under their CycleUp brand. In doing so, they empower women to achieve sustainable development and to achieve individual or common goals. Their work with individual women benefits the women themselves, their families and their communities.



Tech2Students - Dublin

Tech2Students bridges the digital divide for students. The campaign was developed in April 2020 by Trinity Access and Camara Ireland in response to the digital divide experienced by students in need. Covid 19 showed that the digital divide is real and remains a huge problem for second-level students, those in direct provision and adult learners in marginalised communities. Between 50-70% of students in DEIS schools experience a lack of access to broadband or a suitable learning device.



The Bike Hub - Dublin

The Bike Hub fosters social and business activities by engaging with the local community through bike-related projects.

They work with young people in schools and community organisations by training them on bike-safety and basic repairs and maintenance programs. The Bike Hub partner with local organisations supporting active-lives for the over 60s. They strive to create a collaborative and dynamic hub where cyclists can meet, maintain and plan for fun cycling activities. They also donate refurbished bikes to refugees organisations and other people in need.



The Upcycle Movement - Nationwide

The Upcycle Movement is a creative design studio specialising in transforming waste into worth.

'Neo Collection' marked their debut design collection, which are bags and accessories made from upcycled wetsuits for everyday adventures. They are also home to 'Re Source' – a platform for sourcing waste streams (resources) and connecting these with designers who can repurpose them. The UpCycle Movement facilitate talks and workshops which focus on upcycling and finding business opportunities in locally sourced waste materials.



The Useless Project - Nationwide

The Useless Project helps people take steps toward more sustainable living through tutorials, workshops, tips on food waste prevention, reuse, secondhand and upcycled fashion for individuals, schools or businesses.

They run events (including a monthly flea market), workshops, and provide a wide range of education and awareness-raising resources from DIY upcycling videos and sewing tutorials, to batch-cooking recipes, climate justice deep-dives and listicles of our favourite sustainable brands in Ireland and beyond.



Thriftify - Nationwide

Thriftify connects charity shops with consumers who care, helping to bring about a sustainable fashion movement while growing funding for great causes.

They are an online double-sided marketplace that helps charities realise the true value of unsold donated stock, including books, CDs, console games and fashion. Thriftify have taken all of the complexities and challenges of selling online and combined them to create the charity retail platform, which is available to charity retailers and other ethical enterprises who want to sell online. The software makes it simple for volunteers working in charity shops to decide whether the item could get a better value on the Thriftify platform and to upload it.



Usel - Northern Ireland

Usel operates a Circular Economy business model that contributes to the wider Circular Economy through the recycling of mattresses, carpet, furniture, plastic, cardboard and waste electrical items.

They are Northern Ireland's only mattress recycling provider, diverting over 1000 tonnes of waste from landfill every year. Usel collect mattresses from council recycling centres, bed retailers and hoteliers across the province and bring them back to our licenced facility. 96% of each mattress is recycled, the remaining 4% is sent to energy from waste. In addition, they are creating employment opportunities for people with disabilities and health related conditions within its recycling operation.



WeShare - Nationwide

WeShare is a Gift Economy Community that shares skills, knowledge, practical support, ideas, stuff and time, and all for free. It was founded by volunteers, for volunteers and is run by volunteers. All WeShare activities are conceived, designed, implemented, and administered by people who give their time so that we can all benefit from a more caring society and live a more sustainable life.

They give, swap, lend, teach and learn from and with each other – for free. Our website provides the platform for sharing for all groups within the WeShare collective. WeShare is a community of people aiming to reduce the environmental impact of consumption by sharing the things we only use occasionally.

Appendix B

CRNI Board and Executive

CRNI Board Members:

Una Lavelle, Chairperson **Recycle IT**

Linda Ward, Co. Secretary **Irish Charity Shops Association**

Bernie Connolly, Director **Cork Environmental Forum**

Mark Fox, Director **Panda Waste**

Michael Sloan, Director **East Belfast Mission**

Sarah Millar, Director **Rediscovery Centre**

CRNI Executive

Mary Fleming, CRNI Network Executive

Christine Costello, CRNI Fundraising & Communications Manager

Eimear Montague, Northern Ireland Network Coordinator

Appendix C

CRNI Project Partners

Government Departments

Department of Enterprise, Trade and Employment
Department of Housing, Local Government and Heritage
Department of Rural and Community Development
Department of Social Protection
Department of the Environment, Climate and Communications
Department of An Taoiseach

EU & National Organisations

European Circular Economy Stakeholder Platform
European Recycling Platform (ERP)
European Recycling Platform (ERP)
RREUSE (European Reuse)
Environmental Protection Agency (EPA)
Regional Waste Authority
IBEC

Regional Development Authorities

Local Authorities
Regional Authorities
Local Development Companies

Research & Educational Institutes

Third Level Institutes
Research Institutes

Not-for-profit Organisations

WEEE Ireland
Business in the Community Ireland (BITC)
Ireland Funds
Inter Trade Ireland

Appendix D

CRNI Expected Outcomes

1. Grow membership base to grow from 40 to 70 members by end of 2025.
2. Provide 10 business development and training opportunities for members per annum.
3. Provide 10 knowledge sharing and networking opportunities for members per annum.
4. Host biannual conference with 150 attendees drawn from a range of organisations.
5. Circulate 6 E-zine newsletters per annum.
6. CRNI Members on an annual basis:
 - Employ 2,500 people, many previously distant from the jobs market
 - Provide 10,000 people with volunteering opportunities
 - Engage 80,000 people throughout Ireland with education and training opportunities
 - Generate €50 million in traded income
 - Generate €60 million in social value
 - Reuse and recycle 25,000 tonnes
 - Generate 150,000 tonnes in carbon savings

Appendix E

CRNI Member Feedback 2021

For all ranked questions 1 star = not at all beneficial, 5 stars = extremely beneficial

NETWORKING:

Since the start of 2021, please rate how beneficial CRNI has been to your organisation in providing opportunities to participate in knowledge sharing/networking with other reuse and/or repair organisations.

Average Rating 4.4

TRAINING:

Since the beginning of 2021 please rate how beneficial CRNI has been to your organisation in providing training to sustain/enhance your organisation's activities in reuse and/or repair.

Average Rating 3.3

PROMOTION:

Since the beginning of 2021, please rate how beneficial CRNI has been in promoting your organisation's products/services/activities in reuse and/or repair.

Average Rating 4.2

FUNDING:

Since the beginning of 2021 please rate how beneficial CRNI has been in providing information about funding opportunities in reuse and/or repair to your organisation.

Average Rating 4.1

BUSINESS OPPORTUNITIES:

Since the beginning of 2021, please rate how beneficial CRNI has been in providing information about business opportunities in reuse and/or repair.

Average Rating 3.4

POLICY:

Since the beginning of 2021, how beneficial has CRNI been in representing your organisation's policy priorities in reuse and/or repair to policymakers?

Average Rating 3.6



Community Resources Network Ireland (CRNI)
Repair, Reuse, Recycle

*The all-island representative body for community
repair, reuse and recycling organisations.*

Strategic Plan (2022 - 2025)