

CRNI MEMBER IMPACT REPORT

#ReuseRepairRecycle

20
21



“

CREATING
AN IRELAND
WHERE THE
WORD WASTE
DOESN'T EXIST



Table of Contents

03 Introduction

08 Supporting a circular economy:
About us + our member network

15 CRNI Member Impact 2021

22 The circular economy in action:
Case studies

30 Our asks:
Creating a more circular future

Introduction

Welcome to our 2021 Member Impact Report.

We're thrilled that you want to learn more about our growing network of members who work in community based reuse, repair and recycling across Ireland. Their important work in building a more Circular Economy in Ireland straddles the lines of 'Green' and 'Social'.

By Green, we mean that CRNI members work is at the heart of driving the circular economy. They work in communities across Ireland on reuse, repair and recycling initiatives, with the aim of creating an Ireland where the word waste doesn't exist.

By social, we mean that CRNI members strive to facilitate social inclusion by providing employment and engagement opportunities in repair, reuse and recycling to people traditionally excluded from the jobs market. They also provide goods and services at affordable prices, or at no cost at all, so that everyone can have access.

This report is a celebration and acknowledgement of the work they carried out in 2021. The term 'labour of love' can certainly be applied here. What you'll see when you get to read on is an amalgamation of CRNI members' life work and mission. Our members include Bounce Back Recycling, a mattress recycling initiative who provide employment opportunities to the Travelling Community in Galway.

We also have Deaf Enterprises in our network, a furniture restoring initiative in Cork who provide training and employment opportunities to the Deaf Community, and many many more organisations who choose courage over comfort every day when they step up to deliver for their communities.

This report contains some conservative impact metrics that we're delighted to share. In 2021, just over **€52 million in turnover** was generated by CRNI members. They also **saved some 171,000 carbon tonnes**, and **worked with over 1000 people on employment schemes**.

With increased supports, we're confident that the community reuse, repair and recycling sector can deliver a Circular Economy that has incredible environmental, social, and economic benefits not just for some, but for all.

To learn more about the work of our members, visit our website (www.crni.ie) or follow us on social media @crnireland.



Mary Fleming
National Executive
CRNI



Una Lavelle
Board Chairperson
CRNI

A note from CRNI's Core Funder

The EPA leads the Circular Economy Programme, a national statutory programme which is supporting the Whole of Government Circular Economy Strategy. The Circular Economy Programme works through four pillars – advocacy, insights, data & co-ordination, innovation & demonstration, delivering through partnerships and supporting the regulatory framework for circularity. Programme activities include delivering the national food waste prevention programme, Green Enterprise (annual circular economy innovation funding call), supporting Green Public Procurement implementation, gathering evidence and behavioural insights, regulating end-of-waste and by-product legislation, national statistical reporting, and developing partnerships with established leaders, such as with CRNI, to promote and realise the benefit from adopting circular practices in large networks. The Circular Economy Programme's vision is an Ireland where businesses, citizens and the public sector use less resources, prevent waste and achieve sustainable economic growth.

The EPA has provided funding support to CRNI since 2010, supporting CRNI's core work areas of supporting members, mainstreaming the community resources sector and building the network's capacity. In that time the network has grown to over 41 members and reporting on the environmental, social and economic impact metrics of the network has developed. The EPA see the impact metrics as a valuable output of CRNI's work, not only to track the impact of the network over time, and measure the effectiveness of partnership activities, but also the value of setting up reporting structures within their network for monitoring key circular economy activities such as reuse and repair which are outside the waste reporting regime.

Establishing a reuse, repair and recycling culture is central to delivering a circular economy. CRNI continues to be a leader in promoting reuse, repair, recycling and social inclusion within communities in Ireland and the EPA wishes the network success in its ongoing work.



Fiona McCoole
Circular Economy Programme
EPA



CRNI receives core funding through the EPA Circular Economy Programme

Our Team



Mary Fleming

National
Executive



Christine Costelloe

Funding and
Communications
Manager, Research Lead



Orla Matthews

ReMark Project
Manager



Lisa Byrne

Administration
Manager

Our Board

Chairperson



Una Lavelle

Recycle
IT

Secretary



Linda Ward

Charity Retail
Ireland

Director



Sarah Miller

The Rediscovery
Centre

Director



Bernie Connolly

Cork Environmental
Forum

Director



Michael Sloan

East Belfast
Mission

Director



Mark Fox

Panda
Waste



The Food Cloud Kitchen
in action at
The Rediscovery Centre

Supporting a circular economy

About us

We are the Community Resources Network Ireland, more commonly known as CRNI.

As CRNI is **the only community based reuse, repair and recycling network in Ireland**, it has, along with its members, the potential to play a unique and valuable role in the development of resource efficiency and circular economy initiatives at both local and national levels.

Our vision

Our vision is an Ireland where the word ‘Waste’ doesn’t exist and where our entire community benefits from the social, environmental and economic value of all reusable resources. Our aim is to promote community based, sustainable waste management as a practical and effective way of tackling Ireland’s growing waste problem.

Our values

Social Inclusion: We facilitate social inclusion by supporting inclusive employment and increased access to the benefits of repair, reuse and recycling.

Respect: We respect and value people, communities and the environment.

Collaboration: We work in collaboration with a range of partners in supporting our members to grow; developing, piloting innovative environmental solutions and strengthening community repair, reuse and recycling programmes throughout Ireland.

Credibility: We represent the Community Resources Sector. We gather evidence and are rigorous in our analysis and approach. We are transparent and accountable in all our dealings.



Supporting a circular economy

Our strategic goals



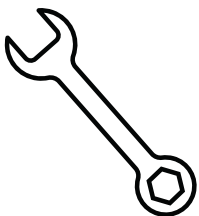
Support for members

We help our members grow and thrive through developing a dynamic network fostering knowledge sharing and collaboration, strengthening members' capacity through business opportunities and training, representing members at local, national and international level and promoting our membership base.



Mainstreaming the community resources sector

We work to mainstream reuse, repair and recycling through raising the profile of the sector and promoting behavioural change, developing supportive policy and conducting or supporting research to help overcome barriers.



Building our capacity

To facilitate the growth of the network and its long term sustainability, we will continue to build our internal capacity through good governance and developing our funding strategy.

Supporting a circular economy

CRNI Member Activities

Numbers of member organisations working across 9 categories in 2021

11

Textile reuse
+ upcycling

09

Bike donations,
upcycling + repair

09

Paint reuse +
recycling

04

Recycling electric
+ electronic
equipment

22

Running events,
education +
workshops

06

Specialist social
recycling
schemes

04

Reducing food +
drink waste

11

Furniture
upcycling + office
fit outs

07

Reducing your
plastic waste

Supporting a circular economy

Our 2021 Members



Supporting a circular economy

Our 2021 Members



Supporting a circular economy

Our 2021 Members





Reused paint for sale at

Habitat for Humanity ReStore

CRNI Member Impact 2021

The figures

Environmental impact

Positive impact for our environment



REUSED
12,441 TONNES



REPAIR SERVICES
54 TONNES



RECYCLED
10,195 TONNES



CARBON SAVINGS
171,238 TONNES

CRNI Member Impact 2021

The figures

Social impact

Positive impact for communities and the well-being of individuals and families.



FULL TIME EMPLOYEES
617 PEOPLE



PART TIME EMPLOYEES
154 PEOPLE



EMPLOYMENT SCHEMES
1,029 PEOPLE



VOLUNTEERS
7,661 PEOPLE



SOCIAL VALUE
€50,971,095

CRNI Member Impact 2021

The figures

Economic impact

Positive financial impact for Ireland



TURNOVER
€52,683,563



CUSTOMERS SERVICED
6,374,151 people



WORKSHOPS + EVENTS
91,942 people reached

CRNI Member Impact 2021

Translating the figures

Social impact

9,461

**People employed or volunteering
is equal to...**



49 more people than the population of the
Clonakilty and Listowel **combined**

CRNI Member Impact 2021

Translating the figures

Environmental impact

171,238

**Carbon tonnes saved
is equal to...**



111,305 households in the Netherlands not consuming electricity for one year



445,219 economy flights from Amsterdam to Rome



Driving 1,027,428,000 km in a diesel car



20,829,904,034 smartphones fully charged

CRNI Member Impact 2021

Translating the figures

Economic impact

€52,683,563

**In financial turnover in 2021
is equal to...**



27,728,191 school dinners as per the Irish Government's School Meal Scheme



4,798 Solar Panels installed (average price) in households across Ireland



54,068 children in Ireland receiving free pre-school childcare (average price) for 1 month



19,932 people in Ireland having their (average) monthly salary paid for 1 month



Bike Reuse + Repair
at The Bike Hub

The circular economy in action: Case studies



IRD Duhallow Furniture Revamp, Co.Cork Furniture Reuse and Upcycling

Duhallow REVAMP is a furniture recycling and re-use initiative based in Cork that was set up with 3 key purposes: providing sheltered training and employment opportunities, helping our environment by reducing landfill and fly tipping providing quality up-cycled furniture at low cost to pensioners, low income families, people who are marginalised and unemployed because of mental health difficulties and other reasons.

We also run a paint recycling and re-use initiative. Relove paint is a quality, water based remixed emulsion paint, made in Cork. This paint which would otherwise be destined for disposal, is collected from civic amenity sites in Cork city and county and then filtered, remixed, recoloured and repackaged on site at IRD to produce Relove Paint.

As well as helping to protect our environment by using paint in your homes and businesses, you will be supporting our social enterprises who epitomise the circular economy and sustainability at its very best.



ENVIRONMENTAL



REUSED
13,000 KG



REPAIR SERVICES
5,000 KG



CARBON SAVINGS
8.1 TONNES



SOCIAL



FULL TIME EMPLOYEES
4 PEOPLE



EMPLOYMENT SCHEMES
10 PEOPLE



ECONOMIC



SOCIAL VALUE
€176,176



CUSTOMERS SERVICED
1000



Recycle IT, Dublin

Community Electrical Recycling Initiative

Recycle IT accept old or damaged bikes for metal recycling and/or community reuse
Our not-for-profit organisation works to deliver environmentally friendly recycling solutions and real training and employment opportunities.

Recycle IT can offer organisations a cost-effective and efficient recycling collection service in Dublin and surrounding areas. Our team will accept all types of electrical, electronic or pure metal waste.

We ask that you let us know what you have to recycle and we can help determine the best electronic waste management solution for you including IT breakdown and destruction services.



ENVIRONMENTAL



REUSED
350 KG



REPAIR SERVICES
1,785 KG



RECYCLED
653,000 KG



CARBON SAVINGS
25.95 TONNES



SOCIAL



FULL TIME EMPLOYEES
11 PEOPLE



PART TIME EMPLOYEES
3 PEOPLE



EMPLOYMENT SCHEMES
5 PEOPLE



ECONOMIC

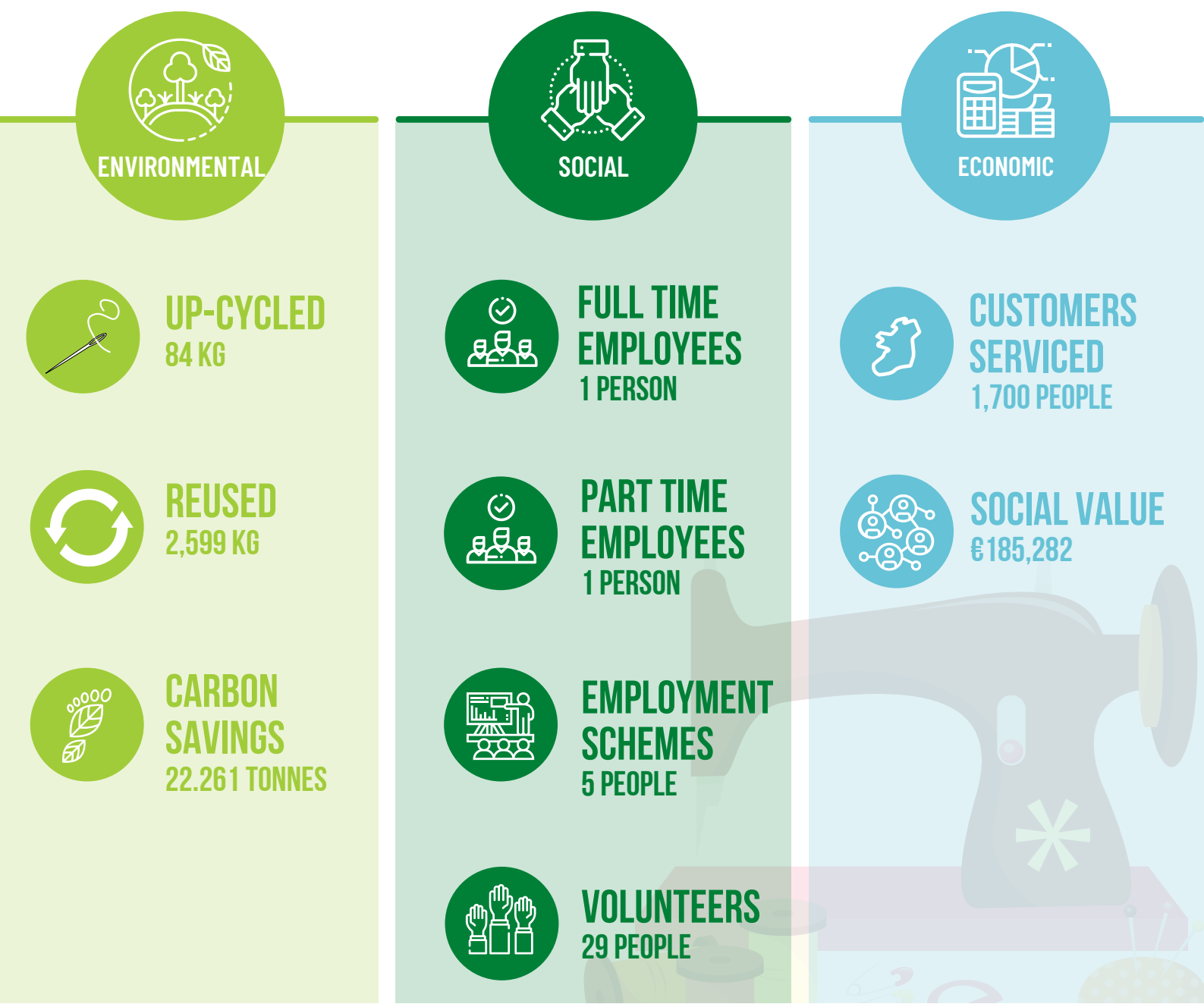


SOCIAL VALUE
€250,734

Roscommon Women's Network (RWN) is a local community project and charity dedicated to supporting women and families throughout County Roscommon.

The 'CycleUp' initiative is an environmental and training social enterprise which addresses the issue of textile waste through a community development approach to environmental protection, supporting the hardest to reach women and families to engage.

CycleUp trains individuals and groups in the repair and reuse of materials and produces upcycled items for sale as part of the circular economy. By upcycling waste and unwanted textiles through its training and social enterprise, CycleUp raises awareness of the Circular Economy, as well as educates and empowers women to generate flexible employment opportunities while protecting the environment in a rural context.



An Mheitheal Rothar offers a full set of bicycle repair and service options, undertaken by our team of experienced mechanics. Our award winning ReCycle Your Cycle initiative takes bikes sent for scrap to Galway City Council Civic Amenities Centre and repairs them, and concurrently teaches valuable cycle mechanic skills to their trainees. This saves carbon emissions and reduces pollution from transporting, smelting down and recasting scrap metal. At the same time it provides skilled jobs, training opportunities and an affordable, fossil fuel free means of transport.

We also upcycle bikes while teaching repair skills under the Pilot Bike & Ebike Upcycling scheme supported by Department of Rural & Community Development/Pobal; and teach cycle mechanics via our Local Training Initiative in Cycle Mechanics supported by the GRETb,

You can also support our social and environmental outcomes by using our shop on Headford Road to purchase a new bike or ebike under the Bike to Work scheme. By purchasing a high quality, durable bike via the Bike to Work scheme, you are ensuring that the bike is easier to repair while you own it, and can be more easily recycled when it comes to the end of its first life with you.



REUSED
516 KG



REPAIR SERVICES
8448 KG



CARBON SAVINGS
41.796 TONNES



FULL TIME EMPLOYEES
6 PEOPLE



PART TIME EMPLOYEES
1 PERSON



EMPLOYMENT SCHEMES
3 PEOPLE



CUSTOMERS SERVICED
3,000 PEOPLE



SOCIAL VALUE
€134,435



Bryson Recycling, Donegal

High quality, efficient and cost effective recycling services

Bryson Recycling delivers high quality, efficient and cost effective recycling services across Ireland. At the core of everything we do is the triple bottom line; social responsibility, environmental sustainability and economic viability.

We are continually looking for ways to improve our recycling services and focus on ensuring that the materials collected for recycling are of a high quality and can be recycled locally. Over 80% of the materials we collect through our kerbside service in Northern Ireland and over 70% of the materials we collect at our Recycling Centres in Donegal are recycled on the island of Ireland. We use this approach as it benefits the local environment and economy and helps to support local jobs.

We also operate six Civic Amenity Sites in Donegal where a wide range of items are collected for reuse and recycling including bicycles for the Bikes for Africa campaign.



ENVIRONMENTAL



REUSED
117,300 KG



REPAIR SERVICES
1,800 KG



RECYCLED
2,124 KG



CARBON SAVINGS
7,755 TONNES



SOCIAL



FULL TIME EMPLOYEES
5 PEOPLE



PART TIME EMPLOYEES
9 PEOPLE



ECONOMIC



SITES MANAGED
6



SOCIAL VALUE
€96,234



Charity Retail Ireland

High quality, efficient and cost effective recycling services

Charity Retail Ireland is the umbrella group for charities who operate shops to fundraise for their causes and we are funded mainly by our charity members. Our members range from large national charities to local, community based charities and our 42 members operate 500 shops nationwide.

All our members are registered with the Charities Regulator and have CHY registration with the Revenue Commissioners. All members have also signed up to our Code of Charity Retailing that is a condition of their membership.

If you buy from or donate to a charity shop displaying the Charity Retail Ireland membership badge in their window, you can be assured that it is run by a registered charity and is a genuine charity shop. By supporting your local charity shop you will be supporting many essential services for your community and vital overseas aid.



ENVIRONMENTAL



REUSED
8.007 MILLION KG



RECYCLED
8.069 MILLION KG



CARBON SAVINGS
39,129 TONNES



SOCIAL



FULL TIME EMPLOYEES
385 PEOPLE



PART TIME EMPLOYEES
110 PEOPLE



EMPLOYMENT SCHEMES
720 PEOPLE



VOLUNTEERS
6,809 PEOPLE



ECONOMIC



CUSTOMERS SERVICED
6,300,000 PEOPLE



RETAIL STORES
468



SOCIAL VALUE
€40,231,880



**Christmas window at NCBI Bray,
Charity Retail Ireland Member**

ENVIRONMENT
NABLE HYDRATION



Get Involved...

- Carry a reusable bottle with you
- Use the TAP MAP at www.refill.ie
- Ask you local business to join the network

Help make Ireland a Refill country!

- Protecting our environment
- Providing healthy hydration
- Saving money

For more information
or to find out how
your business can
become a Refill
Hub visit
Refill.ie



**Portable Hydration Stations
for Any Event with Refill Ireland**

Our asks: Creating a more circular future

Benefits of enabling a circular economy in Ireland

Environmental

Half of total greenhouse gas (GHG) emissions and more than 90% of biodiversity loss and water stress come from resource extraction and processing. Therefore, achieving a circular economy will play an important part in reducing global carbon impact and protecting natural resources, environment and health.

Source: 'Whole of Government Circular Economy Strategy 2022-2023'

Social

The circular economy also requires workers skilled in, for example, repair and maintenance across all product types. This represents a (re) training and up-skilling opportunity for both young and older workers across all regions of the country.

The circular economy is therefore also well aligned with the national Just Transition effort, as well as national skills and training initiatives being led by Skillnet Ireland, whose Statement of Strategy 2020 to 2025 includes the aim to “Support the talent demands for building a low-carbon and sustainable economy through our enterprise-driven climate action up-skilling initiative.”

Source: OECD: 'The Circular Economy in Ireland', 2022 Report

Economic

It is estimated that annual savings of €2.3 billion are achievable by boosting Ireland's circularity.

Source: 'Whole of Government Circular Economy Strategy 2022-2023'

Our asks: Creating a more circular future

1. Fund Environmental Action

- Deliver on promise of increased funding for circular economy activities
- Increase capital investment in reuse, repair & recycling activities
- Provide increased financial support for awareness raising initiatives

2. Support Social Mobility

- Ensure that labour activation schemes are accessible to absolutely everybody who may benefit from them. Conditions of participation should be assessed and offered on a case by case basis, rather than as a generic whole.
- Invest in social mobility through increased financial support of labour activation schemes

3. Fund Sustainable Economic Progress

- Reduce VAT on reuse, repair and recycling goods and services to promote increased circularity and/or increase VAT threshold for social enterprises.
- Develop and support adequate infrastructure to encourage Green Public Procurement



**Creative Reuse Workshops with
ReCreate Ireland**

Thank you

CRNI MEMBER IMPACT REPORT

#ReuseRepairRecycle

20 21
